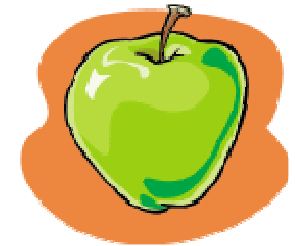

For additional information on how the KAC's Employee Benefits Trust can provide you and your county technical assistance in reviewing health insurance policies, contact one of the following:

Robert J. Mahoney
Senior Benefits Consultant
Haake Benefits Consulting Group
4650 College Blvd. Suite 300
Overland Park, KS 66211
913-529-3210
Robert.Mahoney@haakeins.com

Dennis Kriesel
Senior Policy Analyst
Kansas Association of Counties
300 SW 8th, 3rd Floor
Topeka, KS 66603
785-272-2585
kriesel@kansascounties.org



Sometimes...

...comparing employee health insurance products is like comparing apples to oranges to grapes. They often don't match-up, making objective analysis and comparison difficult.

While the Kansas Association of Counties cannot help sort the fruit in an orchard, we **can help** when it comes to health insurance and plan selection.

The KAC's Employee Benefits Trust has teamed up with the Haake Benefits Consulting Group and Mr. Rob Mahoney to provide *affordable* and *useful* technical assistance in the health insurance bidding process. Claims history, plan design, and bid solicitation are all a part of this assistance.

The goal is simple: to help contain ever-rising health insurance costs without sacrificing benefits deemed important to county employees.



Some Comments and Reactions from County Officials

“Faced with another double-digit increase in health insurance costs, Harvey County sought the assistance of the KAC’s Employee Benefits Trust. After carefully examining our claims history and plan design, Mr. Rob Mahoney of the Haake Companies solicited bids from multiple health insurance providers. He analyzed the bids and was instrumental in negotiating a renewal rate and plan design that saved Harvey County significant dollars.”

-Marge Roberson, Harvey County Commissioner

“We are grateful to the KAC’s Employee Benefits Trust in making available technical assistance services for Norton County’s health insurance plan. We contracted with Rob Mahoney of Haake Benefits Consulting Group to obtain independent, unbiased consultation and that is exactly what we have received. Our net result was turning an impending 21% rate increase into a projected expenditure equal to last year’s expense.”

-John Miller, Norton County Commissioner
